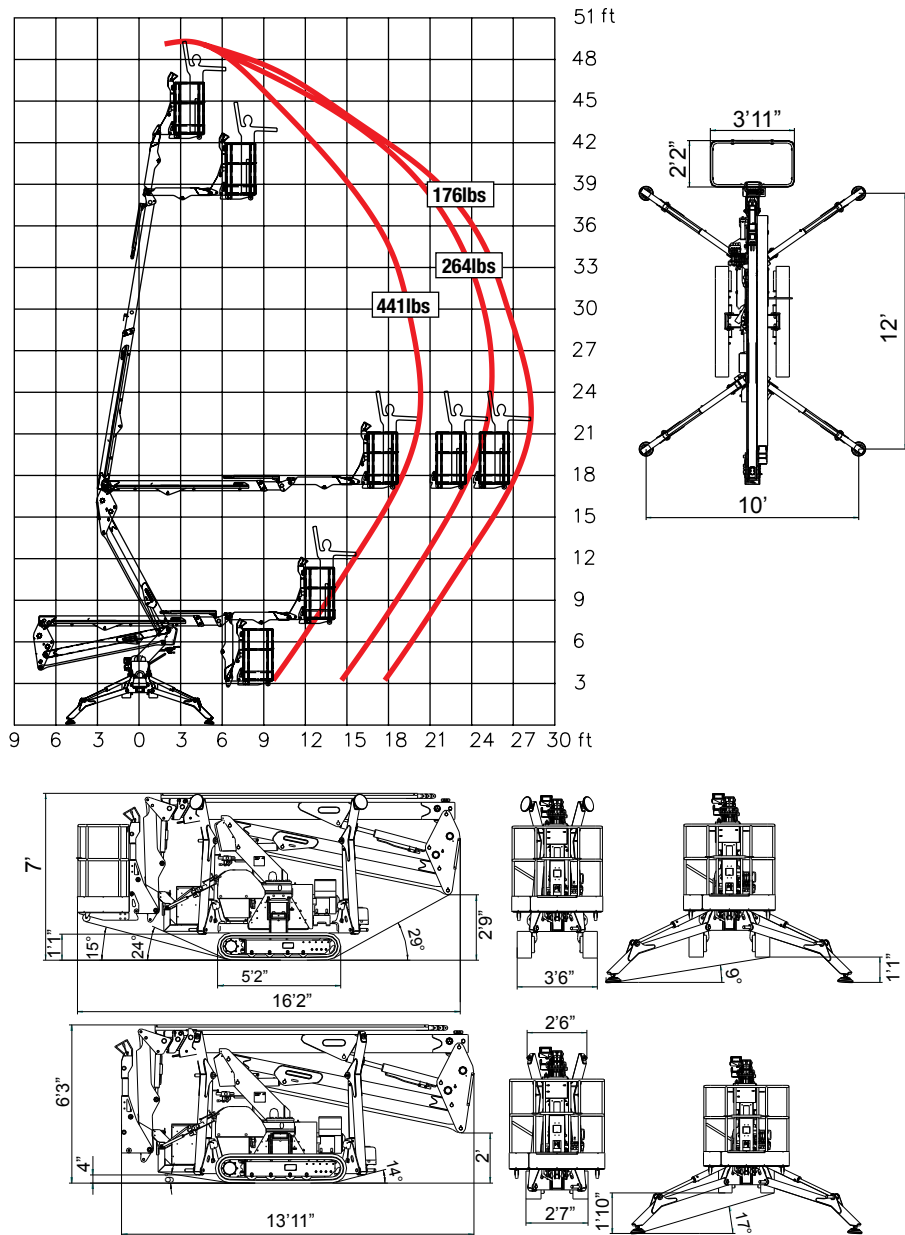


Articulated

Tracked Platform Basket 15.75



DATA DIMENSIONS AND FEATURES ARE INDICATIVE AND NOT BINDING.

TECHNICAL DATA 15.75

Dual-Power

Working Height	50'
Height to Basket Floor	42'8"
Side Reach at 176 lbs	27'10"
Side Reach at 264 lbs	25'7"
Side Reach at 441 lbs	19'8"
Turret Rotation	360°
Basket Dimensions	3'11" x 2'2" x 3'7"
Length (Transport)	16'2"
Length (without Basket)	13'11"
Width (Min/Max)	2'7"/3'6"
Height Stowed (Min/Max)	6'3"/7'
Outrigger Spread	12' x 10'
Driving Speed	1.25 MPH
Gradeability (Uphill)	27°
Gradeability (Sideslope)	14°
Deployment Slope	17°
Max Capacity	441 lbs
Gasoline Engine (Honda)	13 HP
Total Weight of the Machine	4080 lbs

STANDARD FEATURES

Live Hydraulic, Fully Proportional, Hydraulic System with Levers in Basket and at Turret Base

Electro-Mechanical Safety and Ground Pressure Monitoring System

Automatic Sidereach Limiting

Stabilizers/Booms Interblock (Outriggers Disabled once Boom In Operation)

Articulated Boom with Fly Jib for Greater Versatility

Black Rubber Tracks

Variable-Width Undercarriage

Lock Valves on all the Actuators

13 HP Honda Gasoline engine

110V Indoor Use, Pollution FREE Hydraulic System

110V Outlet in the Basket

Emergency Hand Pump

Hour Meter

2-man Basket (Easily Removable)

Removable Outrigger Pads

Heavy Duty Shield Package

Air-Water Outlet in the Basket

OPTIONS

Basket Rotation $\pm 80^\circ$

1-man Basket (31" wide)

Emergency 12V Hydraulic System

White Rubber Non-Marking Tracks

Custom Colors

Increased Size of Foot Plates (13.75" Diameter)

Drive and Stabilization Radio Remote Control

ANSI and CSS conformity.