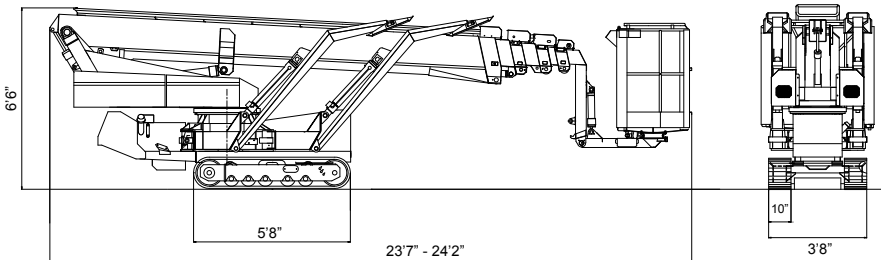
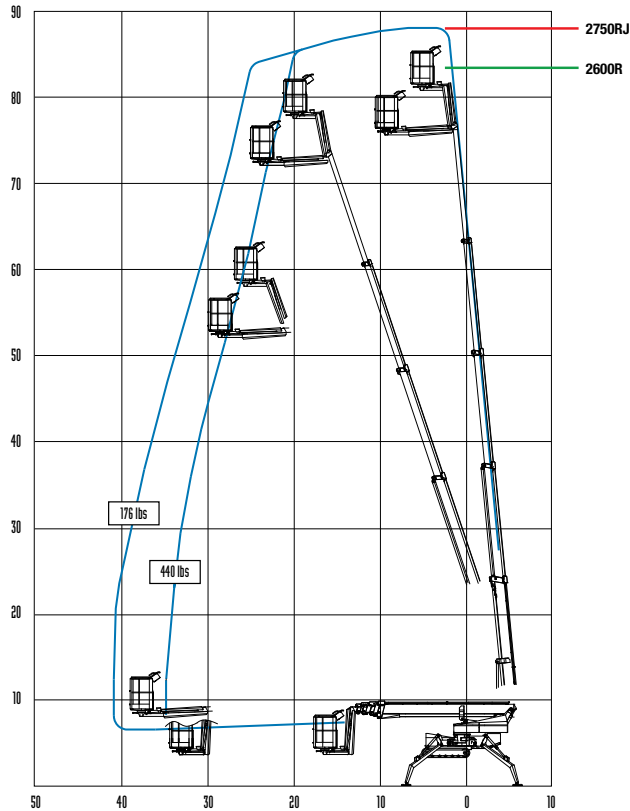


# Tracked OMME 2600R/2750RJ

## Telescopic

## Hybrid Power

### TECHNICAL DATA 2600R/2750RJ



Outrigger Spread Diagram see page 26.  
DATA DIMENSIONS AND FEATURES ARE INDICATIVE AND NOT BINDING.

	2600	2750
Max. working height, ft	<b>83'6"</b>	<b>88'</b>
Max. side reach, ft	41'	41'
Rotation	± 400°	± 400°
Max. basket load, lbs	440 lbs	440 lbs
Basket size, ft (w x l x h)	4'1"x2'10"x3'8"	4'1"x2'10"x3'8"
Basket Rotation	± 41°	± 41°
Moveable Jib Range	0°	90°
Battery	24V/200Ah/5h	24V/200Ah/5h
Charger	24V/30 A	24V/30 A
Diesel engine, Kubota D722	14 kW/18.8 hp	14 kW/18.8 hp
Transport length, ft	23'7"	24'2"
Transport height, ft	6'6"	6'6"
Transport width, ft	3'8"	3'8"
Outrigger Spread-Wide, ft	17'5"/15'0" (max/min)	17'5"/15'0" (max/min)
Outrigger Spread-Narrow, ft	10'6"/9'4" (max/min)	10'6"/9'4" (max/min)
Total weight, lbs	7975 lbs	8417 lbs
Gradeability - up hill	19.3° (35%)	19.3° (35%)
Gradeability - cross hill	14° (25%)	14° (25%)
Deployment ability	21.8° (40%)	21.8° (40%)
Crawler track length, ft	5'8"	5'8"
110V outlet in basket, Max. 10A	Standard	Standard
Manual Emergency Lowering	Standard	Standard

Battery only (400 Ah) version available

ANSI compliant.

### OPTIONS

- >> Fiberglass basket insulated to 1000V
- >> Spotlight in the basket
- >> Intercom
- >> Flashing beacon lights on boom and stabilizers (5)
- >> Radio Remote Control Drive
- >> Custom Colors
- >> Auto Leveling
- >> White Rubber Tracks
- >> 2nd Electric Drive Motor
- >> Increased battery capacity, 400Ah
- >> Variable Width Undercarriage 3'8" - 4'11"  
Extra weight: 1378 lbs, Extra height: 7"