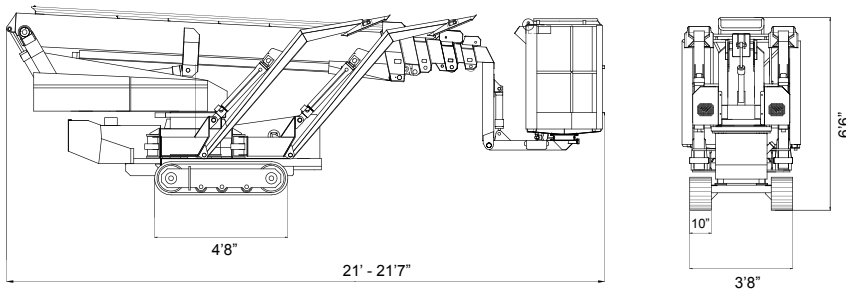
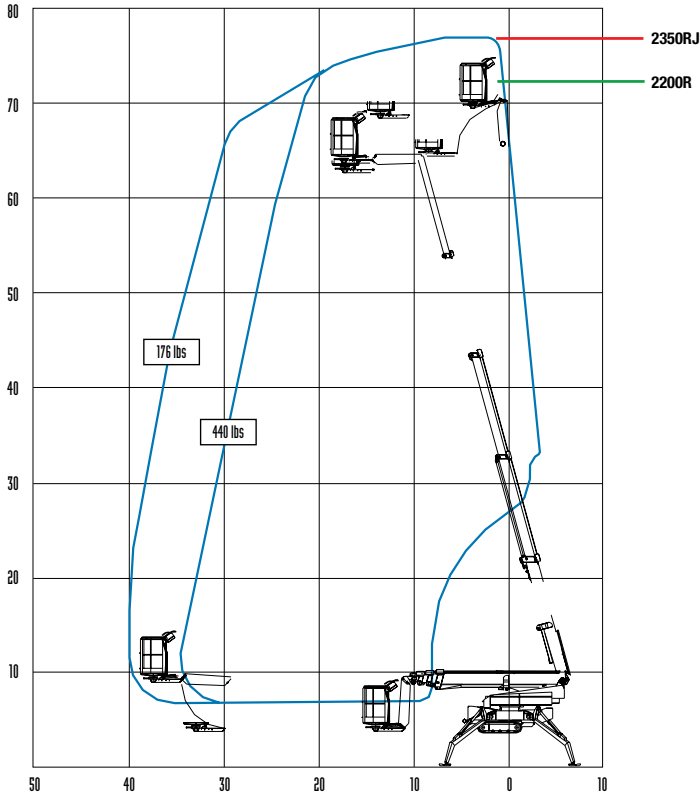


Tracked OMME 2200R/2350RJ

Telescopic

Hybrid Power

TECHNICAL DATA 2200R/2350RJ



Outrigger Spread Diagram see page 26.
DATA DIMENSIONS AND FEATURES ARE INDICATIVE AND NOT BINDING.

	2200	2350
Max. working height, ft	71'6"	76'
Max. side reach, ft	40'	40'
Rotation	± 400°	± 400°
Max. basket load, lbs	440 lbs	440 lbs
Basket size, ft (w x l x h)	4'1"x2'10"x3'8"	4'1"x2'10"x3'8"
Basket Rotation	± 41°	± 41°
Moveable Jib Range	0°	90°
Battery	24V/200Ah/5h	24V/200Ah/5h
Charger	24V/30 A	24V/30 A
Diesel engine, Kubota D722	14 kW/18.8 hp	14 kW/18.8 hp
Transport length, ft	21'0"	21'7"
Transport height, ft	6'6"	6'6"
Transport width, ft	3'8"	3'8"
Outrigger Spread-Wide, ft	17'5"/15'0" (max/min)	17'5"/15'0" (max/min)
Outrigger Spread-Narrow, ft	10'6"/9'4" (max/min)	10'6"/9'4" (max/min)
Total weight, lbs	6710 lbs	7152 lbs
Gradeability - up hill	19.3° (35%)	19.3° (35%)
Gradeability - cross hill	16.7° (30%)	16.7° (30%)
Deployment ability	21.8° (40%)	21.8° (40%)
Crawler track length, ft	4'8"	4'8"
110V outlet in basket, Max. 10A	Standard	Standard
Manual Emergency Lowering	Standard	Standard

Battery only (400 Ah) version available

ANSI compliant.

OPTIONS

- >> Fiberglass basket insulated to 1000V
- >> Spotlight in the basket
- >> Intercom
- >> Flashing beacon lights on boom and stabilizers (5)
- >> Radio Remote Control Drive
- >> Auto Leveling
- >> Custom Colors
- >> White Rubber Tracks
- >> Increased battery capacity, 400Ah
- >> Variable Width Undercarriage 3'8" - 4'11"
Extra weight: 662 lbs, Extra height: 7"