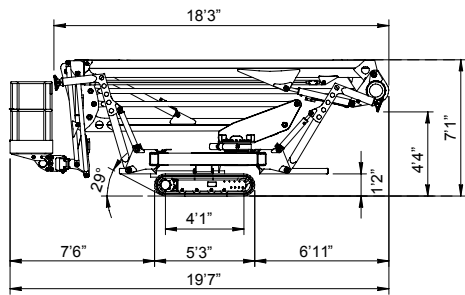
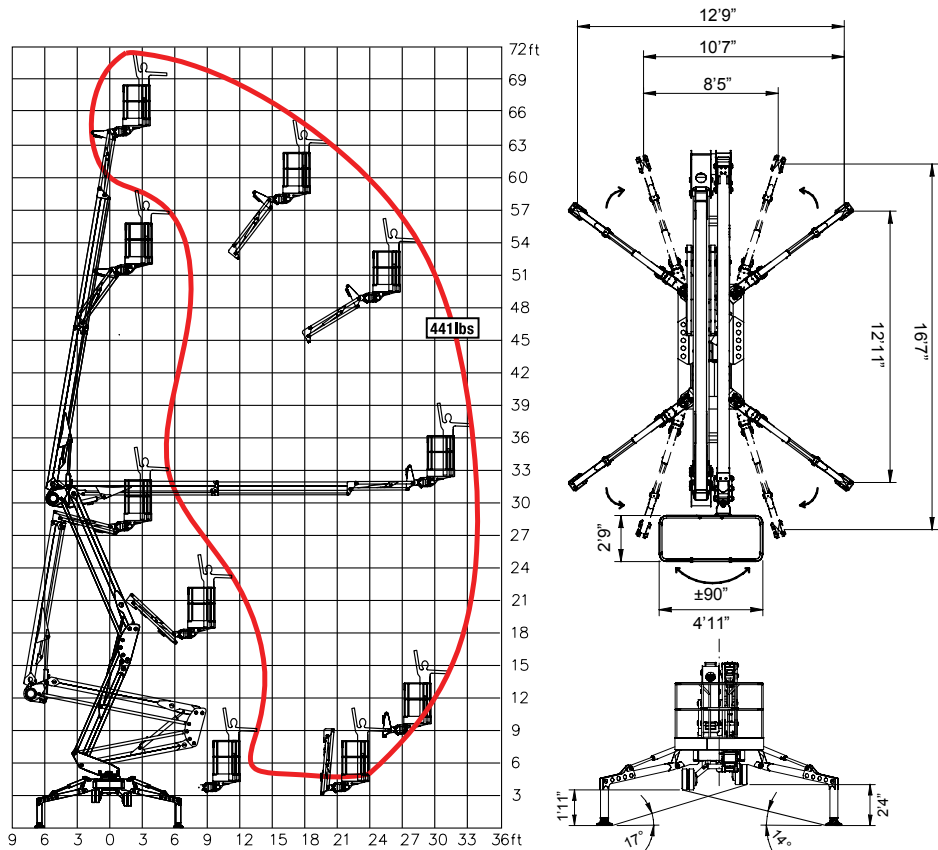


Articulated

Tracked Platform Basket 22.10



DATA DIMENSIONS AND FEATURES ARE INDICATIVE AND NOT BINDING.

TECHNICAL DATA 22.10

Hybrid Power

Working Height	72'
Height to Basket Floor	64'7"
Side Reach at 441lbs	34'
Turret Rotation	365°
Basket Dimensions	4'11" x 2'2" x 3'7"
Length (Transport)	19'7"
Length (without Basket)	18'3"
Width (Min/Max)	3'4"/4'1"
Height Stowed (Min/Max)	6'9"/7'1"
Outrigger Spread (Min/Max)	8'5"/16'7"
Driving Speed	1.5 MPH
Gradeability (Uphill)	16°
Gradeability (Sideslope)	17°
Deployment Slope	17°
Max Capacity	441 lbs
Diesel Engine (Kubota)	15 HP
Battery Hybrid System	24V
Total Weight of the Machine	7,500 lbs

STANDARD FEATURES

- Kubota Diesel/24V Battery Hybrid Power System
- Electro-Mechanical Safety and Ground Pressure Monitoring System
- Automatic Sidereach Limiting
- Stabilizers/Booms Interblock (Outriggers Disabled once Boom In Operation)
- Lock Valves on all the Actuators
- Articulated Boom with Fly Jib for Greater Versatility
- Basket Rotation $\pm 90^\circ$
- 2-man Basket (Easily Removable)
- Variable-Width Undercarriage
- Variable Spread Outriggers
- Automatic Leveling
- Radio Remote Control
- Radio Remote Manual Override
- On-Board Diagnostics
- 110V Outlet in the Basket
- Emergency Hand Pump
- Hour Meter
- Heavy Duty Shield Package
- Black Rubber Tracks
- Air-Water Outlet in the Basket

OPTIONS

- Emergency 12V Hydraulic System
- White Rubber Non-Marking Tracks
- Custom Colors
- 110V Hydraulic System